

Applications for Nursery Places for September 2021

If your child turns three by 31st August 2021, they are eligible to take up a place at Howes in the Nursery class from September 2021.

Application forms are available from the school office.

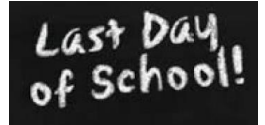


Dates for your diary

Every Friday
Swimming for Years 5
and 6



Friday 28th May: End of
half term



Half Term Holiday:
School closed
Monday 31st May to
Friday 4th June



Monday 7th June:
Start of term



Monday 14th June:
Class photographs



Wednesday 16th June
Reception visual checks



Covid-19

Having reviewed the latest update from the Government, please note that all aspects of the schools risk assessment are still in place. We continue to work hard to ensure that all children and staff are being kept as safe as possible.

Please support us in ensuring that unless exempt, you wear a face covering on the school site and follow social distancing at all times.

We would like to remind families that staff may not be checking the children's Home School Journals as regularly as previously this year as they work to try to keep themselves as safe as possible whilst the pandemic continues.

Communication with school

Thank you for working with us whilst we had issues with our phone lines this week. The school lines were diverted to a school mobile phone so we were still able to receive your calls.

Please can we remind all families that if you need to communicate with any member of staff you can either call us or email Howes@howes.coventry.sch.uk. These messages will be passed onto the correct members of staff who will get in touch with you. Parents should not ask for or use staff email addresses to communicate with individual members of staff.

We need to inform you that Mrs Mair will be leaving us as Inclusion Leader at the end of this academic year.

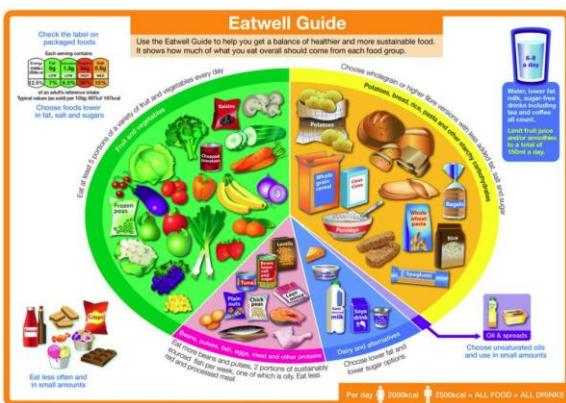


However, we are very lucky that she will be continuing to work with us as an SEN Consultant.

Healthy Eating

Please can we remind all families of the importance of encouraging the children to eat a healthy balanced diet.

Some of the packed lunches we have seen in school recently contain three or more packets of sweets or chocolate bars. Please try to limit these to make them a treat.



Breakfast and After School Clubs

From 17th May, the Government guidance changed on the number of children who can attend wraparound care. You should have received a letter home this week about what Howes will be offering families from 7th June to the end of the school year. If you would like to book your child(ren) into clubs please return the forms by **Thursday 27th May**.



Please can we remind all families to take care when driving around school. Where possible we ask that your maximum speed is 20 mph to ensure that all children are safe walking to and from school.



Please can families remember not to park on or drop off children on the yellow markings on Palermo Avenue, the road to the garages next to the main gate, Dillotford Avenue or the residents parking bays on Crediton Close.

Attendance and Lateness

Class	Attendance		Lateness	
	Last week	This week	Last week	This week
Fir class	84.4%	90%	0	0
Oak Class	94.2%	95.8%	2	4
Ash Class	98.2%	94.8%	2	3
Beech Class	95%	98.5%	1	1
Cedar Class	91.9%	98.9%	2	2
Maple Class	88.2%	90.4%	1	1
Willow Class	86.2%	94.1%	1	1
	92%	94.7%	9	12

Group 1: 8:45am-3pm Group 2: 9am-3:15pm

You must inform the school office if your child is absent from school.
Please ring 02476 411711.

Absence from school

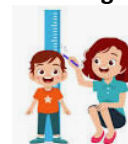
We understand that there are times where your child is not able to attend school, for example, when they are unwell.

If your child is unwell and not in school, please ensure that you contact us on the main school phone number: 02476 411711.

If we do not receive a message from you then we will text you and then if we do not receive a reply we will call you to find out where your child is.

If your child is regularly absent or late we will work with the Local Authority Attendance Team to find out where your child is and why they are not at school.

Friday 25th June:
Reception and Year 6
height and weight checks



28th- 30th June:
Adventure Days for
Year 6



Friday 2nd July:
Reports home to families



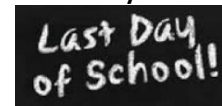
Wednesday 7th July:
Class Swap afternoon



Thursday 8th July:
Sports morning



Wednesday 14th July



Summer Holiday begins:
Thursday 15th July



Remember to follow us on



@HowesCoventry

www.howesprimary.co.uk

Training days for staff: School closed to children

15th July

16th July

19th July

20th July

21st July

(Please note these training dates changed after consultation with parents, Governors and staff)



Please can we remind you that to support Active Fifteen our uniform allows the children to wear grey or black trainers.

Children should not wear any other colour of trainer to school. If the children are not in school shoes or grey/black trainers then they will be asked to change their shoes.

Thank you for working with us to keep Howes smart.

PE Kit

Please ensure your child has the appropriate, named clothing for PE lessons and sporting activities.

PE kit at Howes consists of a white T-Shirt, black PE shorts/jogging bottoms and pumps/trainers.



Earrings should be removed for PE.

Free School Meals

If you think that your child might be entitled to Free School Meals please email Howes@howes.coventry.sch.uk or go to: https://www.coventry.gov.uk/directory_record/30441/free_school_meals

Term Dates for 2021-2022

AUTUMN TERM 2021

Training Day (School closed):
Friday 3rd September

Start of term: Monday 6th September

Half Term (School closed):
25th-29th October

Start of term: Monday 1st November

End of term: Friday 17th December

Christmas Holiday:
18th December – 3rd January

SPRING TERM 2022

Start of term: Tuesday 4th January

Half Term (School closed):
21st- 25th February

Start of term: Monday 28th February

End of term: Friday 8th April

Easter Holiday:
9th – 24th April

SUMMER TERM 2022

Start of term: Monday 25th April

Bank Holiday (School closed):
Monday 2nd May

Training Days (School closed):
25th – 27th May

Half Term (School closed):
30th May- 3rd June

Start of term: Monday 6th June

End of term: Friday 22nd July

Training Day (School closed):
Monday 25th July